

Ultra Narrow Line Width Stable Laser

(1550 nm, PM, narrow line, 100mW)



DATASHEET

BUY NOW



Agiltron produce Ultra Narrow Line Width Stable Lasers. It features, single mode, single frequency, single longitudinal mode, polarization maintaining output, high optical power, excellent output stability over a wide temperature range and without mode hopping, high efficiency, low cost, and high reliability. The unit is made based on Er-doped fiber and distributed feedback Bragg grating seed technologies. It incorporates extra-cavity to achieve low phase and low relative intensity noise (RIN). The laser source is covered by a 1-year warranty.

The laser source can be configured as a module or a turn key unit with build-in controller for lab use. Agiltron also provide customers design. We provide output beam collimator, as well as attional wavelength stabilization choices.

Applications

- Coherent LiDAR
- Hydrophone
- Optical Sensing
- Laser Spectroscopy
- Atomic Physics
- Coherent Communication

Features

- Compact
- Ultra-Stable
- Low Cost
- High Reliability
- High Efficiency

Specifications

Parameter	Min	Typical	Max	Unit
Fixed Wavelength	1530		1572	nm
Output Power	5		100	mW
Output Mode	Linear Polarized	CW, Single Frequency, Single Longitudinal		
Linewidth (FWHM)		150	1	kHz
Polarization Extinction Ratio	20	23		dB
Beam Quality		1.05	1.1	M ²
Output Power Stability (30 m warm-up)		0.5	1	%
Output Isolation	10		100	%
RIN Peak Frequency	300	400	500	kHz
RIN Peak		-105		dBc/Hz
Phaser Noise (1m OPD)		70@100Hz		Urad/ $\sqrt{\text{Hz}}$
		7@10kHz		
		0.7@100kHz		
SMSR (50pm resolution)	60		70	dB
Wavelength Thermal Tuning	0.6		1	nm
PZT Wavelength Tuning		Optional		
Output Isolation	50			dB
Modulation Frequency	DC	10	20	kHz
Modulation Wavelength Range	8		10	GHz
Output Fiber Type	Panda	1550		
Operating Temperature	Standard	0	60	°C
	Special version	-30	85	
Storage Temperature	-40		100	°C
Weight			0.5	kg
Dimension		145 x 100 x 25		mm

Rev 05/30/23

© Photonwares Corporation

+1 781-935-1200

sales@photonwares.com

www.agiltron.com

Information contained herein is deemed to be reliable and accurate as of the issue date. Photonwares reserves the right to change the design or specifications at any time without notice. Agiltron is a registered trademark of Photonwares Corporation in the U.S. and other countries.

Ultra Narrow Line Width Stable Laser

(1550 nm, PM, narrow line, 100mW)



DATASHEET

Electrical Control

Single Frequency Fiber Laser	Minimum	Typical	Maximum	Unit
Control Interface		RS485		
Digital Signal Level (TTL)	0		5	V
DC Power Supply			12	V
Power Consumption			50	W

1. Wavelength can be thermally tuned via software upon request;



Ordering Information

Prefix	Package	Isolator	Collimator	Monitor Port	Wavelength Tuning	Intensity Modulation	Average Power	Connector
UNLL-	Turnkey = 1 Module = 2 Special = 0	Yes = 1 No = 0	No = 0 Yes = 1	Yes = 1 No = 2 Special = 0	No = 1 Yes = 2 Special = 0	No = 1 Yes = 2 Special = 0	10 mW = 01 20 mW = 02 50 mW = 05 100 mW = 10	FC/PC = 1 FC/APC = 2 LC = 3 Special = 0

*Product dimensions may change without notice. This is sometimes required for non-standard specifications.

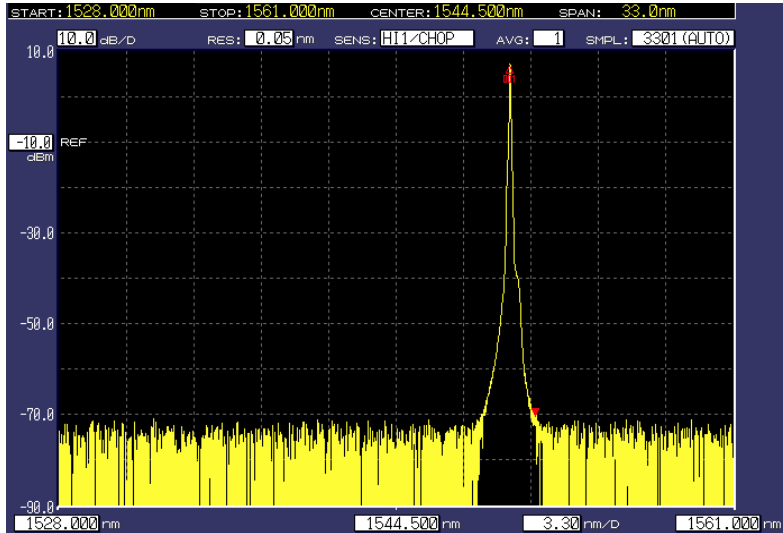
Ultra Narrow Line Width Stable Laser

(1550 nm, PM, narrow line, 100mW)

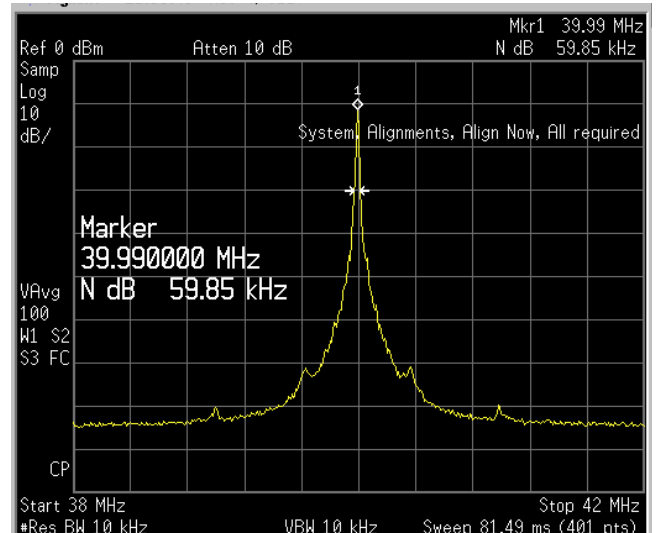


DATASHEET

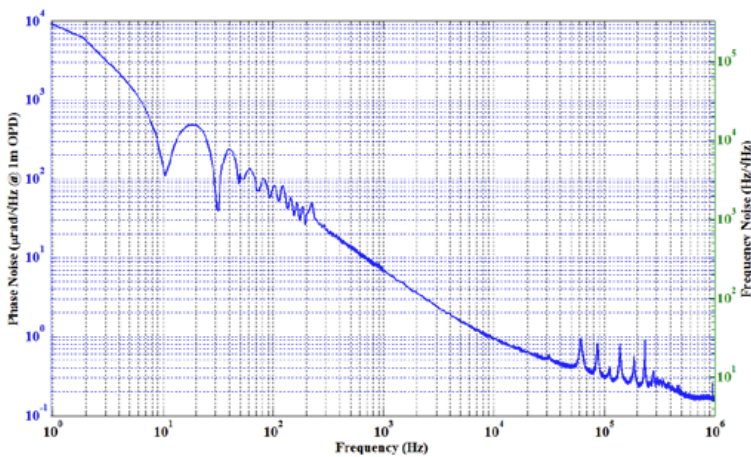
Typical Measured Spectrum



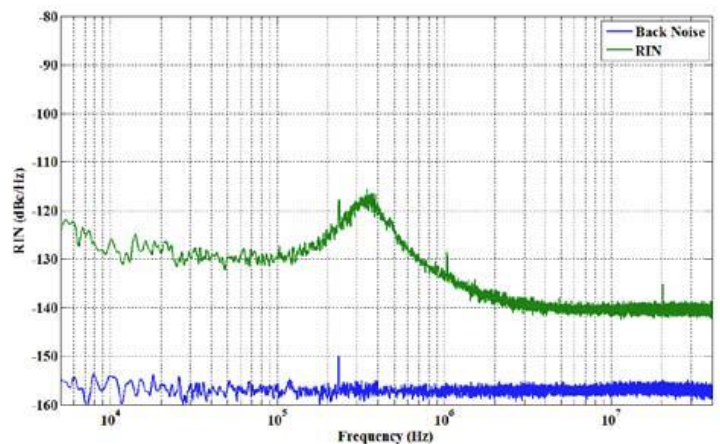
Typical Spectrum



Linewidth



Phase & Frequency Noise



Relative Intensity Noise (RIN)